

**DOCUMENT 00 90 00
ADDENDUM**

ADDENDUM NO. [1] Date: October 1, 2019

**RE: LANESBORO PUBLIC SCHOOLS
 ADDITION AND REMODEL REBID
 100 KIRKWOOD ST EAST
 LANESBORO, MN 55949
 HSR 18063**

**FROM: HSR Associates, Inc
 100 Milwaukee Street
 La Crosse, WI 54603
 (608) 784-1830**

To: Prospective Bidders

This addendum forms a part of the Contract Documents and modifies the original Bidding Documents dated September 2019. Acknowledge receipt of this Addendum in the space provided on the bid form. Failure to do so may subject the Bidder to disqualification.

This Addendum consists of [1] page and [1] 30 x 42 drawings.

CHANGES TO BIDDING REQUIREMENTS AND CONDITIONS OF THE CONTRACT:

1. Section 00 11 13 ADVERTISEMENT FOR BIDS.
 - a. Change bid opening time from 10:00 a.m. to 2:00 p.m.

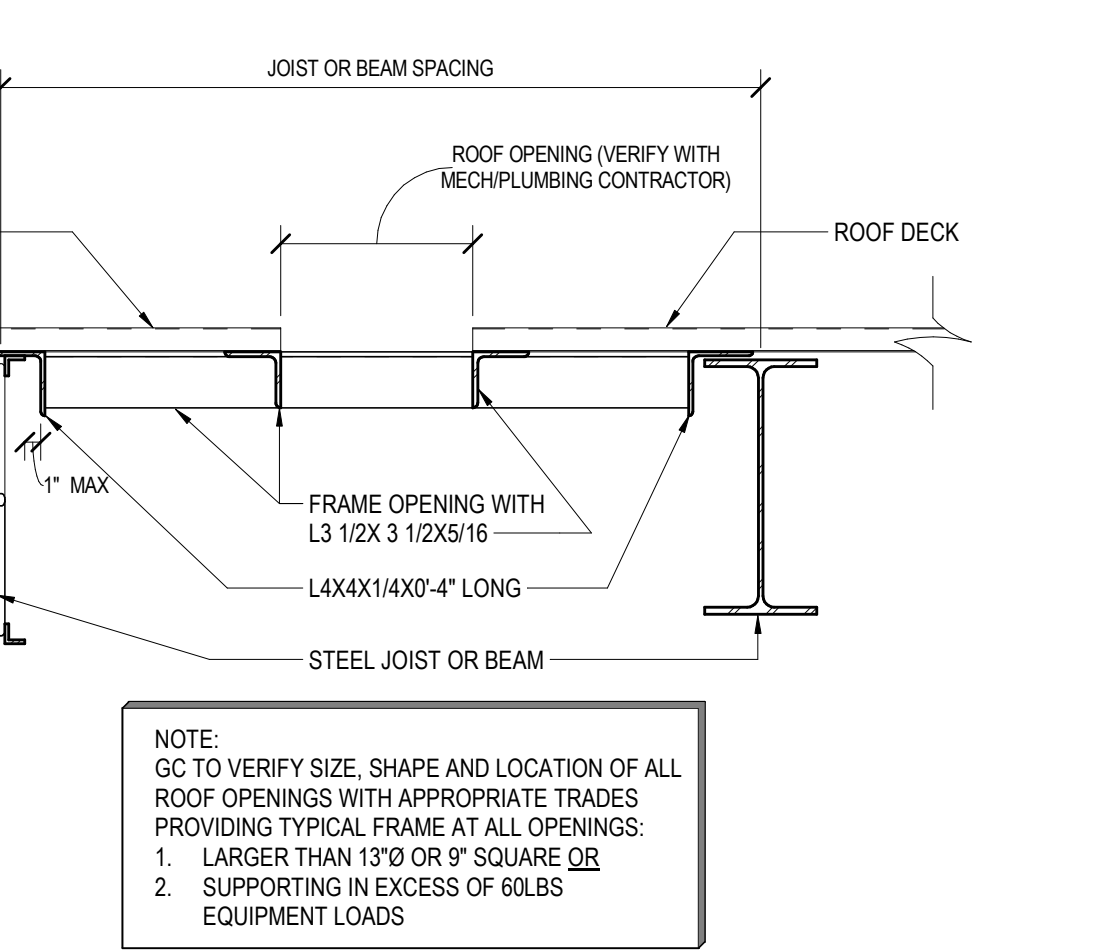
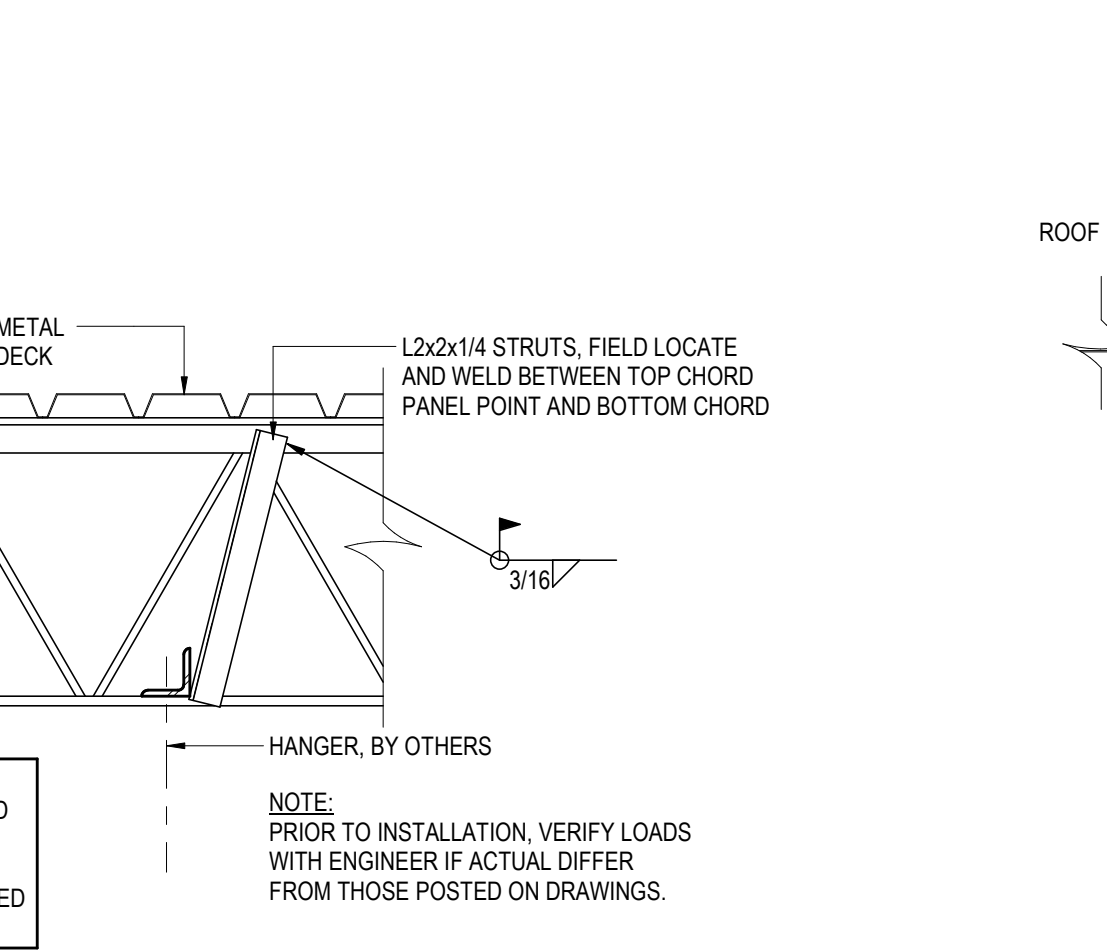
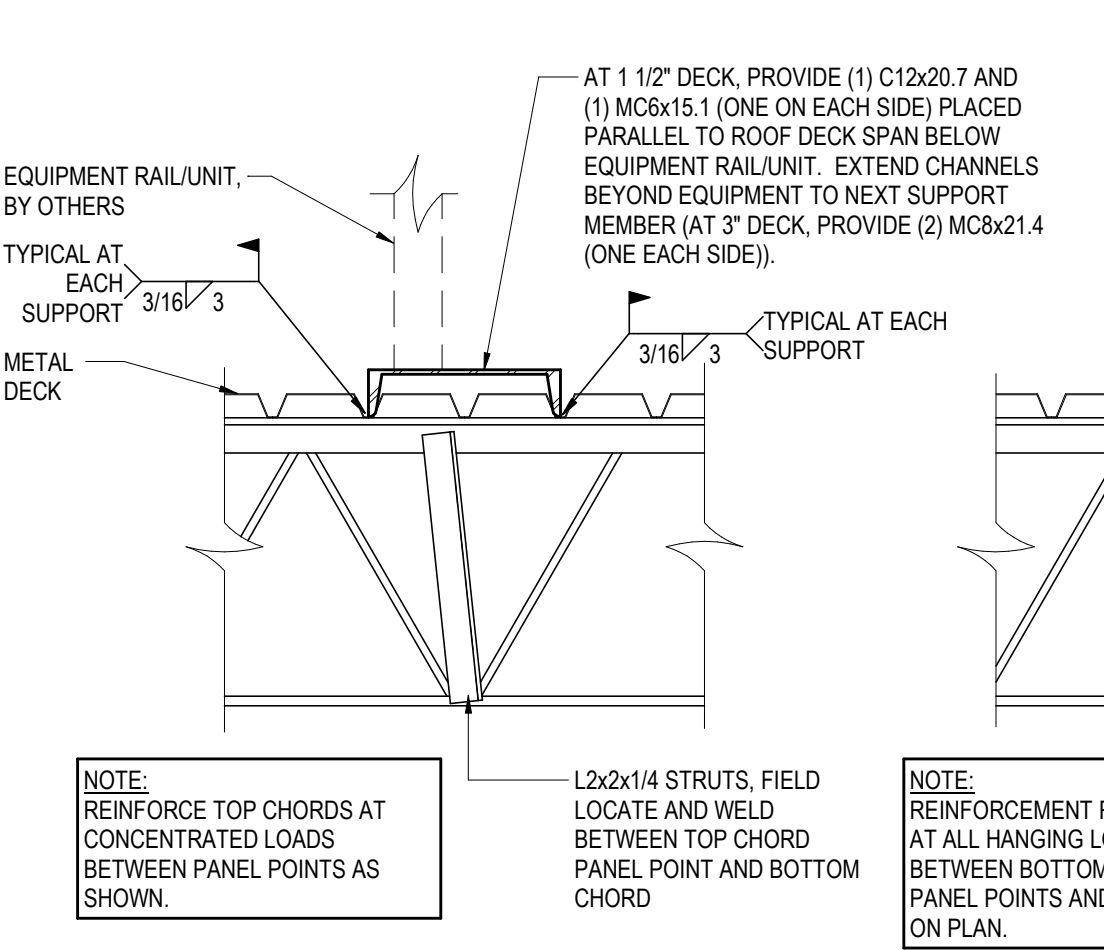
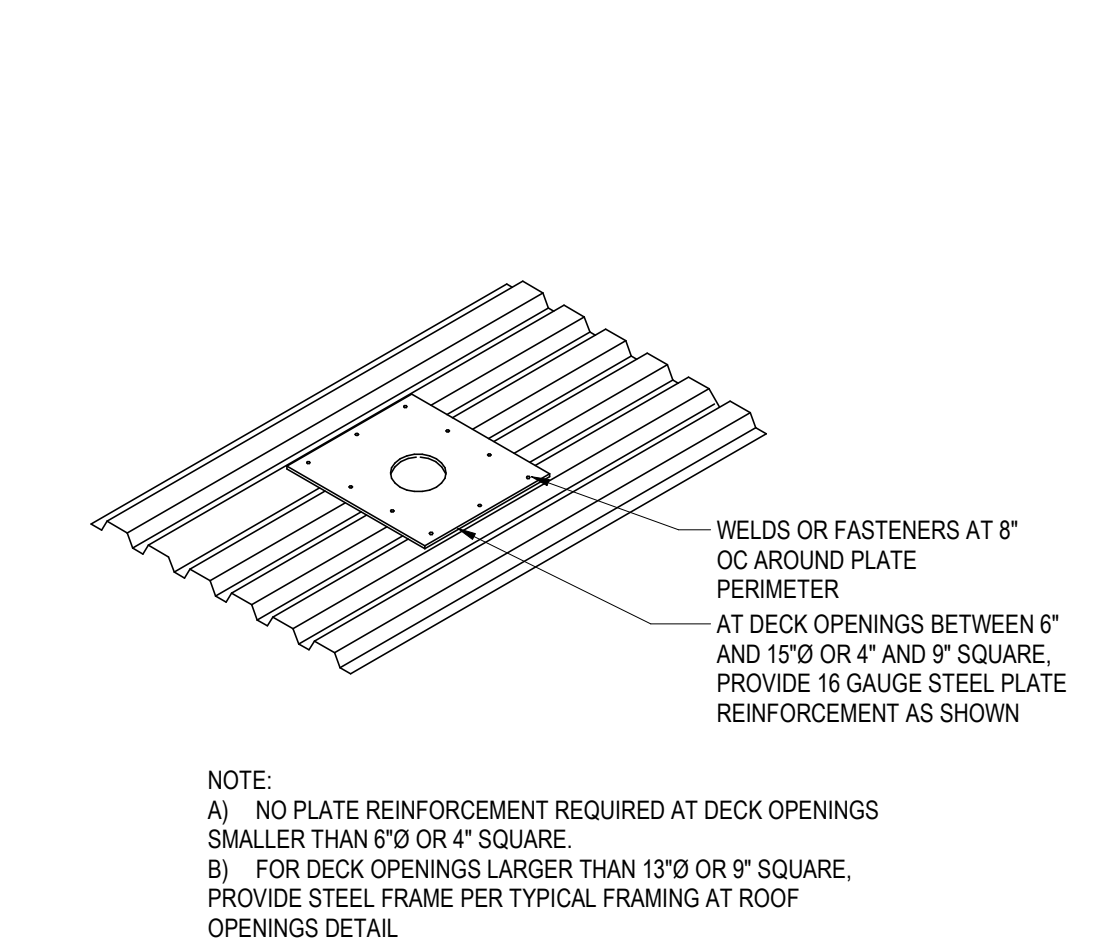
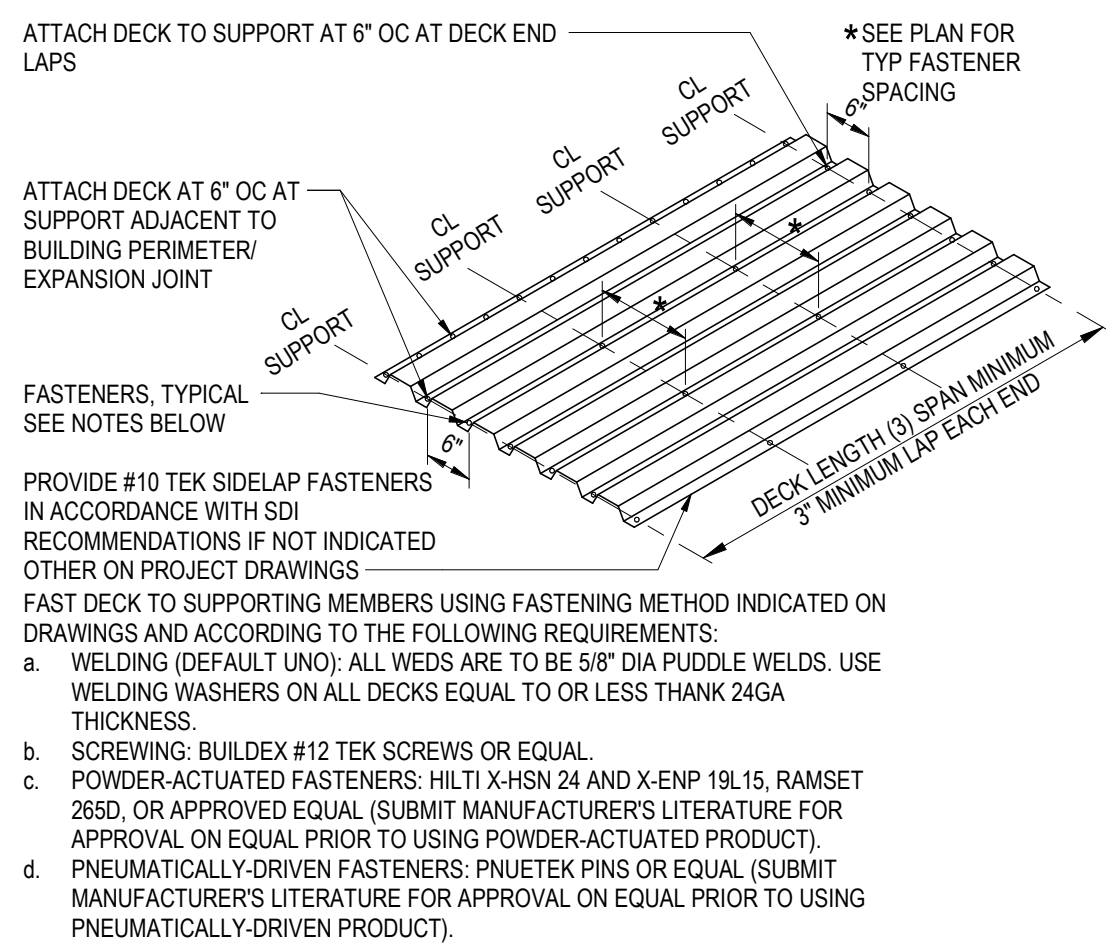
CHANGES TO SPECIFICATIONS:

2. Delete reference to Section 08 44 35 PROTECTIVE FRAMED GLAZING ASSEMBLIES.
Section not required.

CHANGES TO DRAWINGS

3. Sheet A000 COVER SHEET
 - a. Under Architectural sheets add A113 UPPER LEVEL RCP SEGMENT A. Sheet is part of distributed drawings.
4. Sheet S820 FRAMING DETAILS 30 x 42 attached hereto
 - a. Drawing added as part of Contract Documents.

END OF DOCUMENT 00 90 00



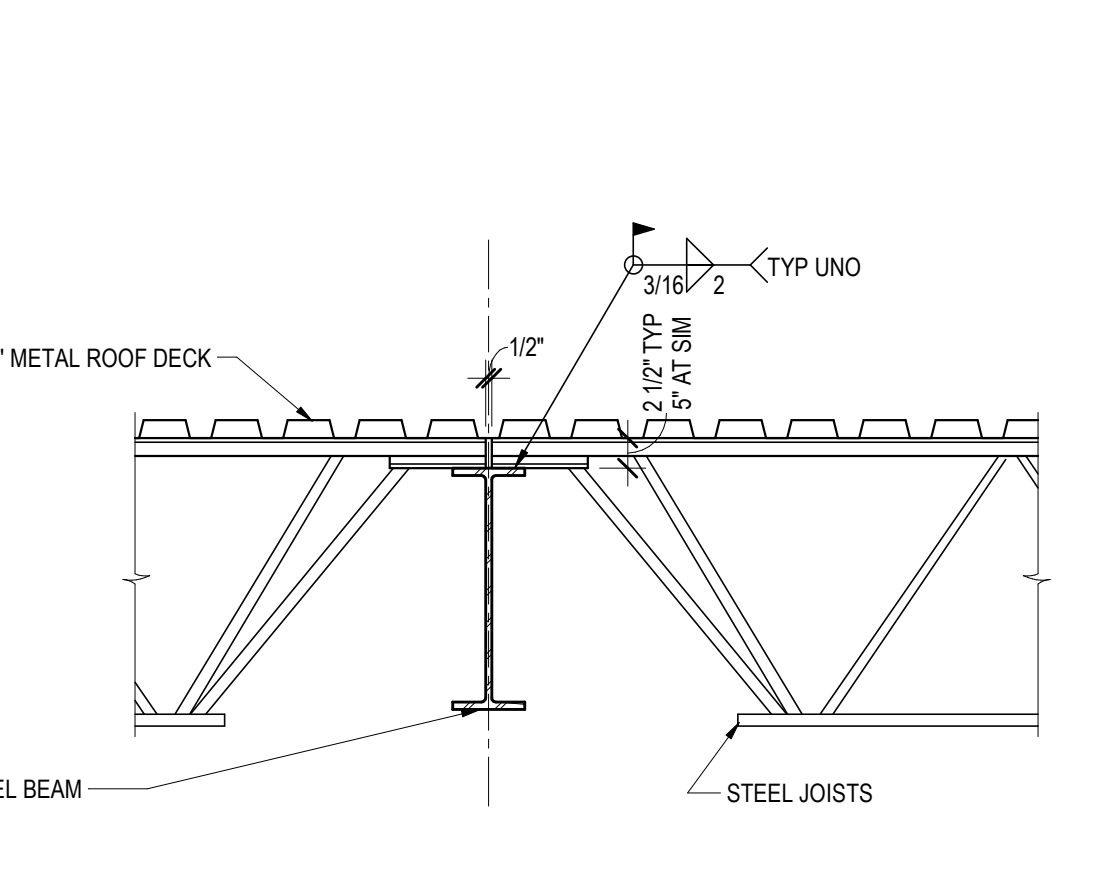
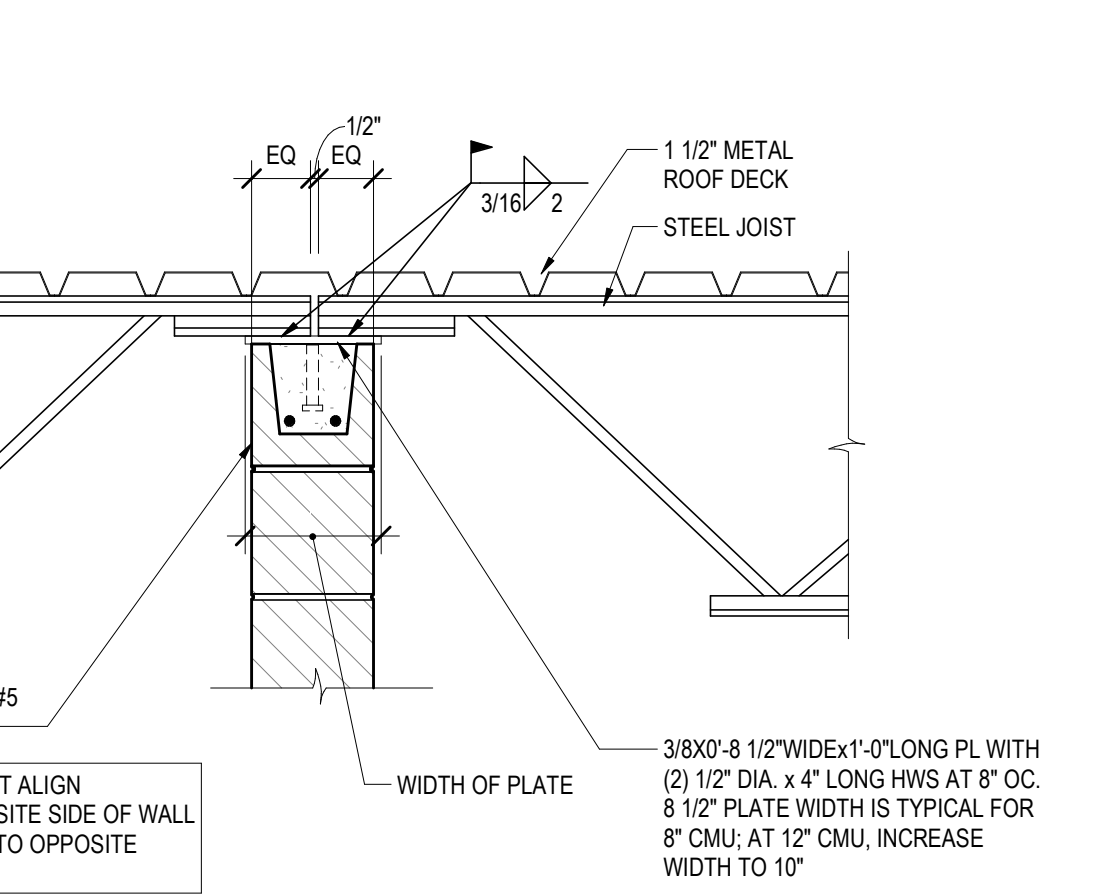
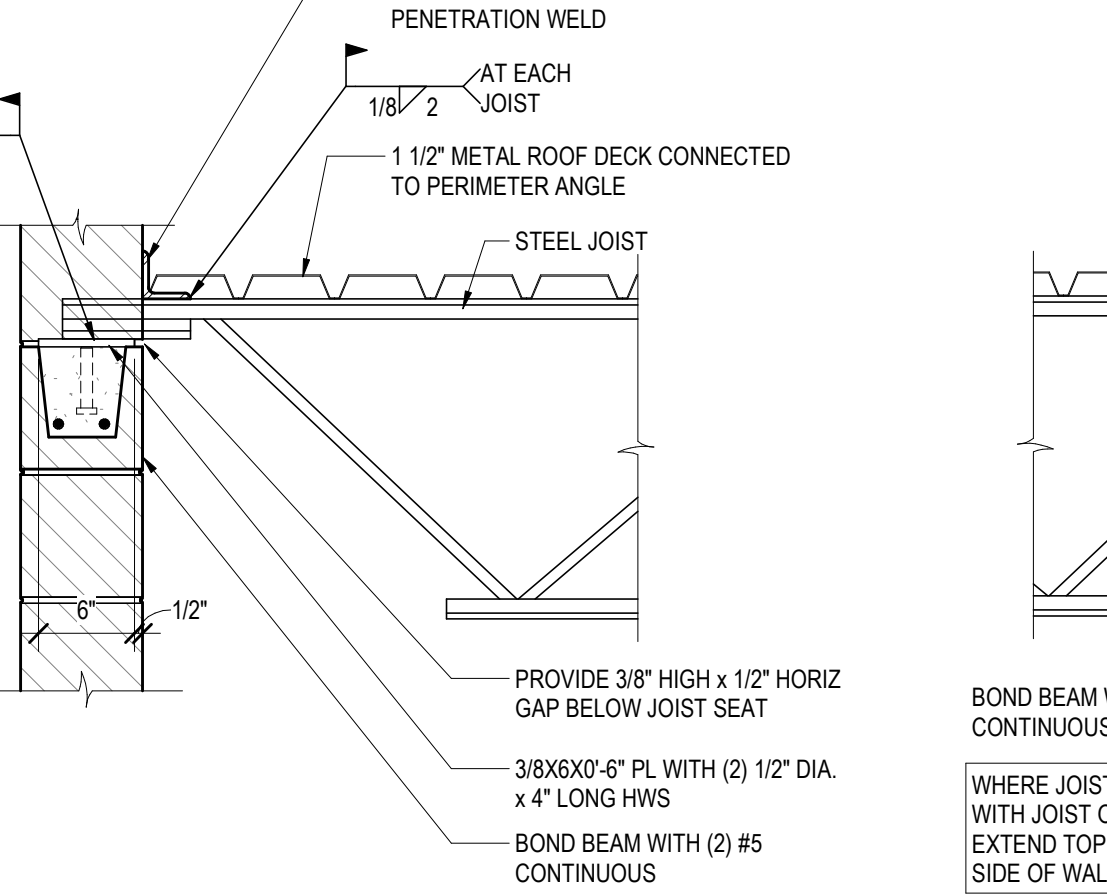
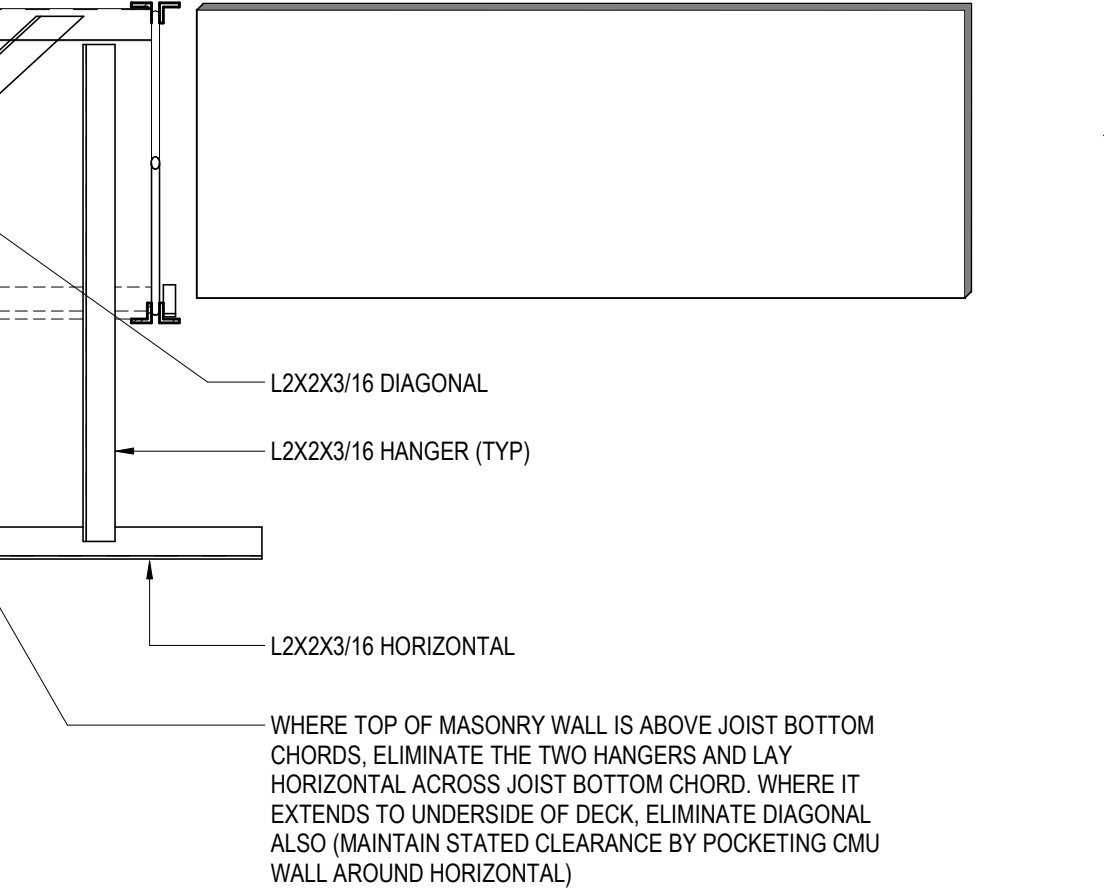
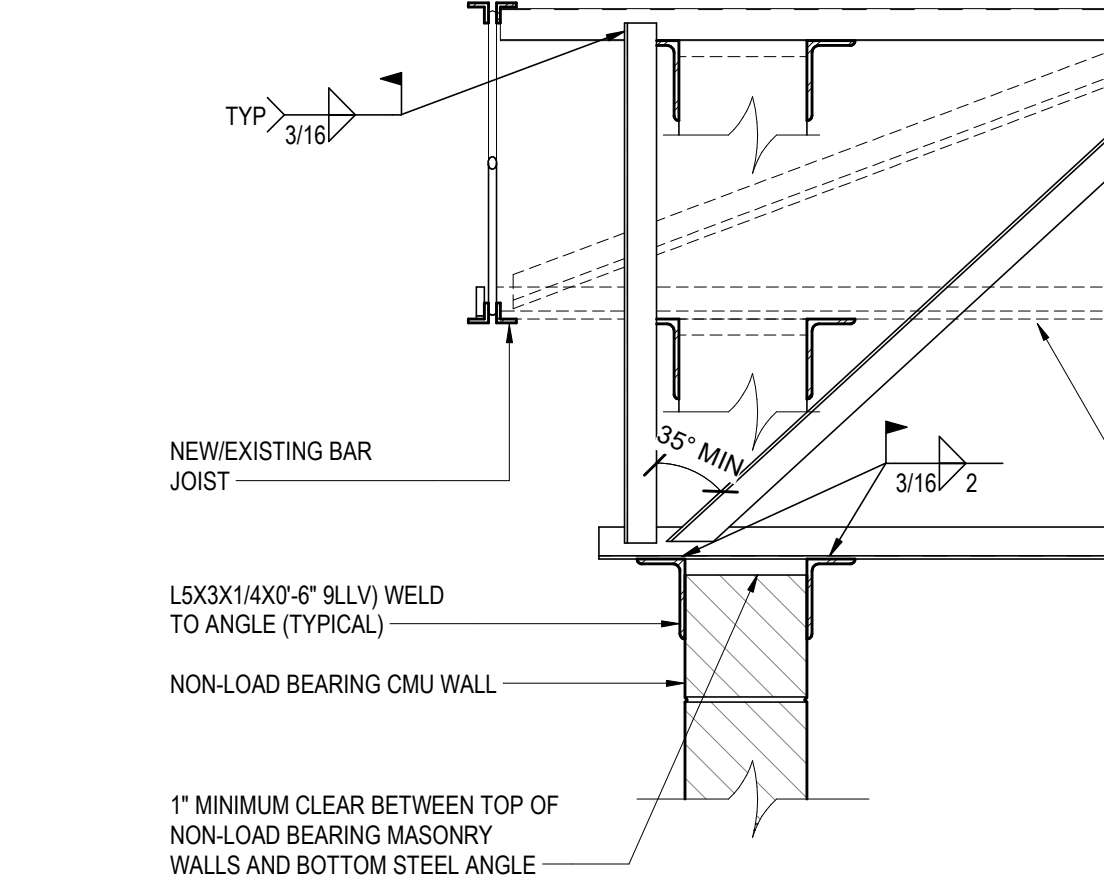
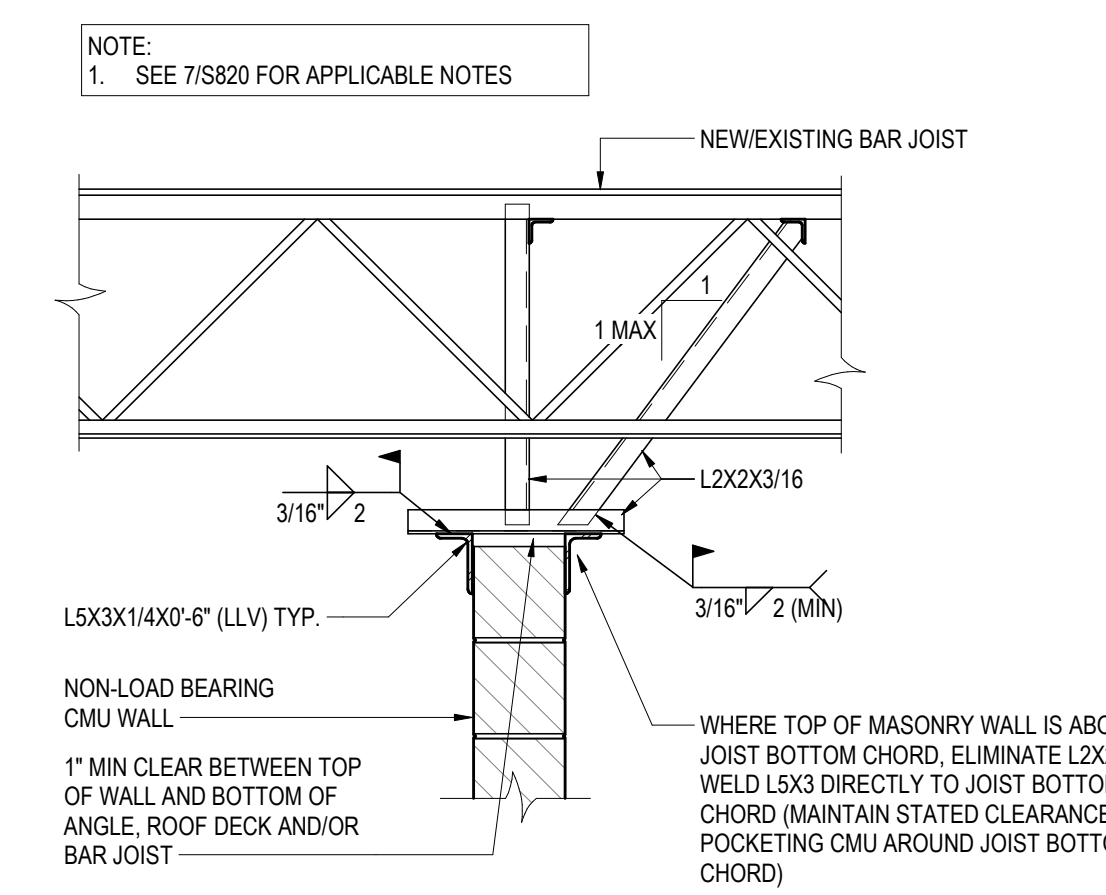
1 METAL DECK FASTENING DETAIL
SCALE: 1" = 1'-0"

2 TYPICAL ROOF DECK OPENING
SCALE: 1" = 1'-0"

3 CONCENTRATED LOAD AT JOIST
SCALE: 1" = 1'-0"

4 TYPICAL FRAMING AT ROOF OPENINGS
SCALE: 1" = 1'-0"

5 TYPICAL END WALL DETAIL
SCALE: 1 1/2" = 1'-0"



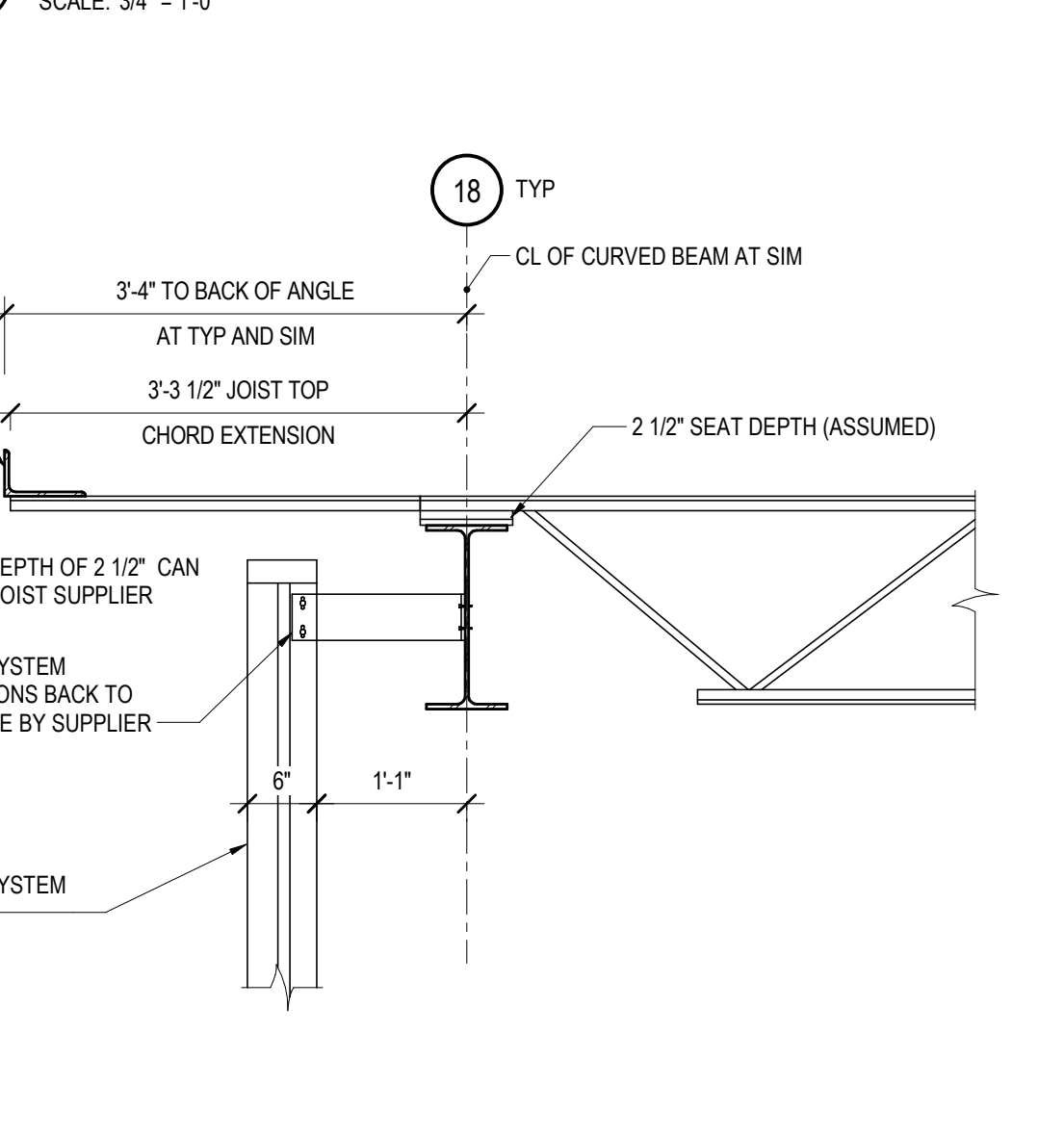
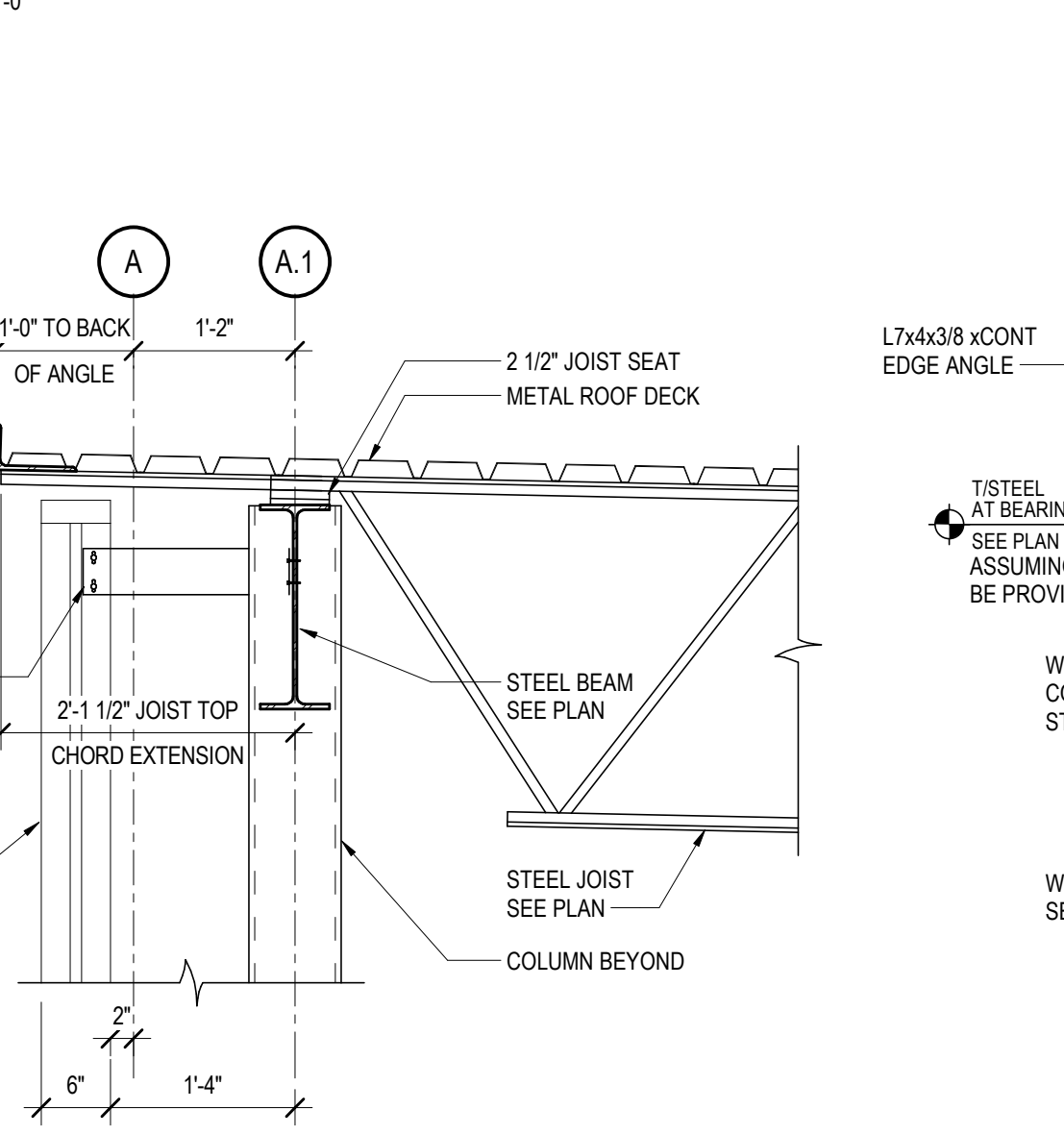
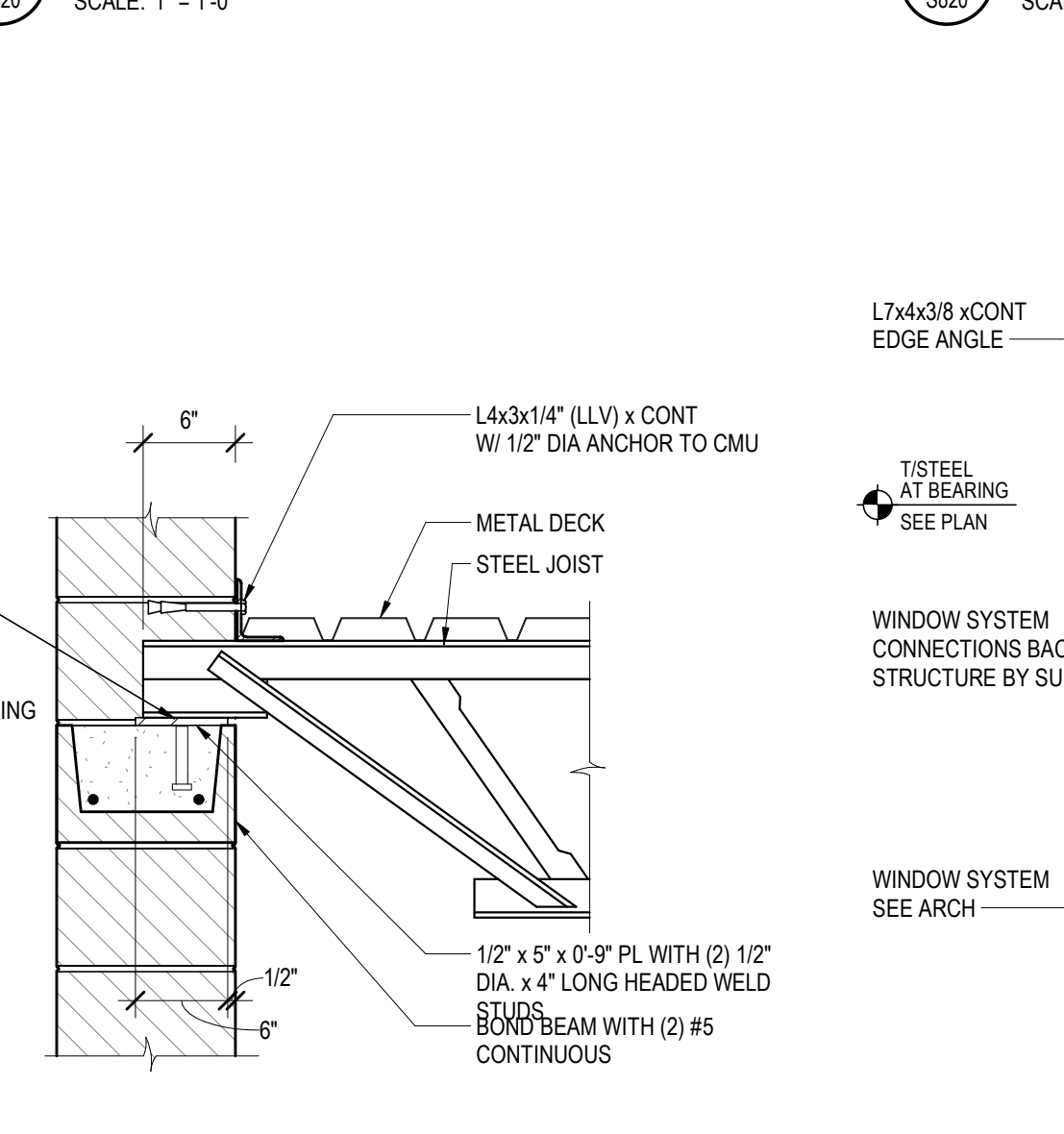
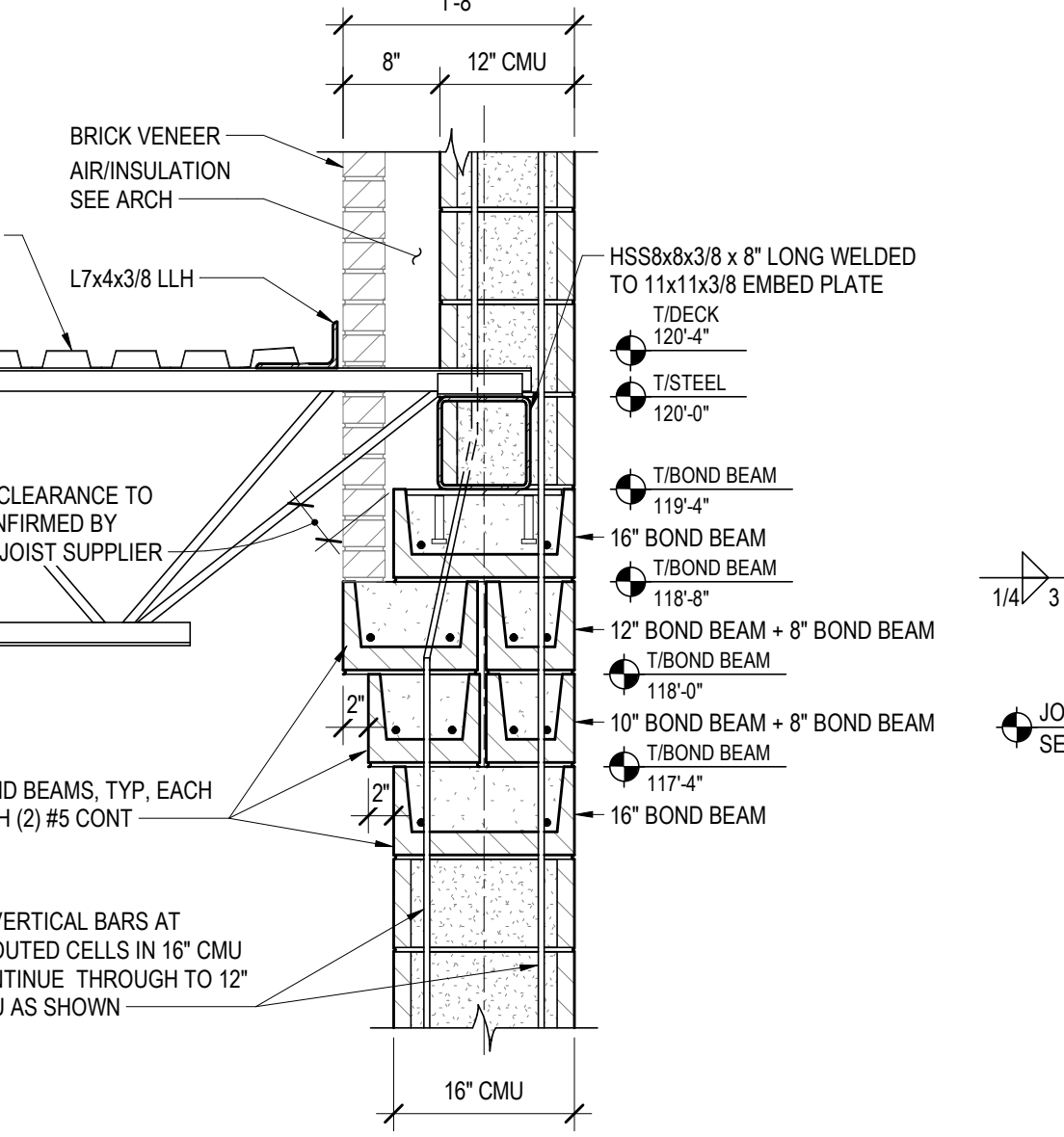
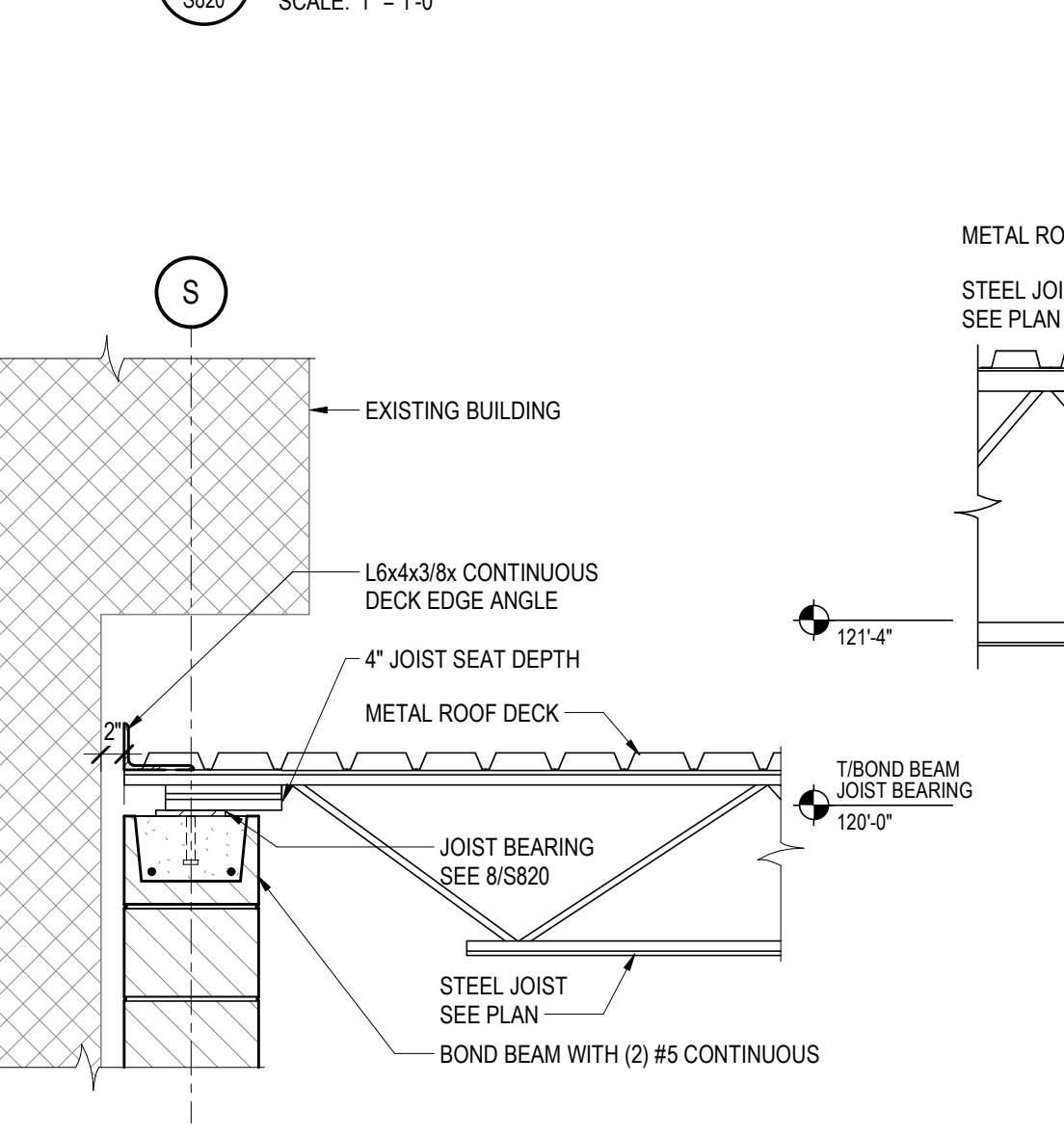
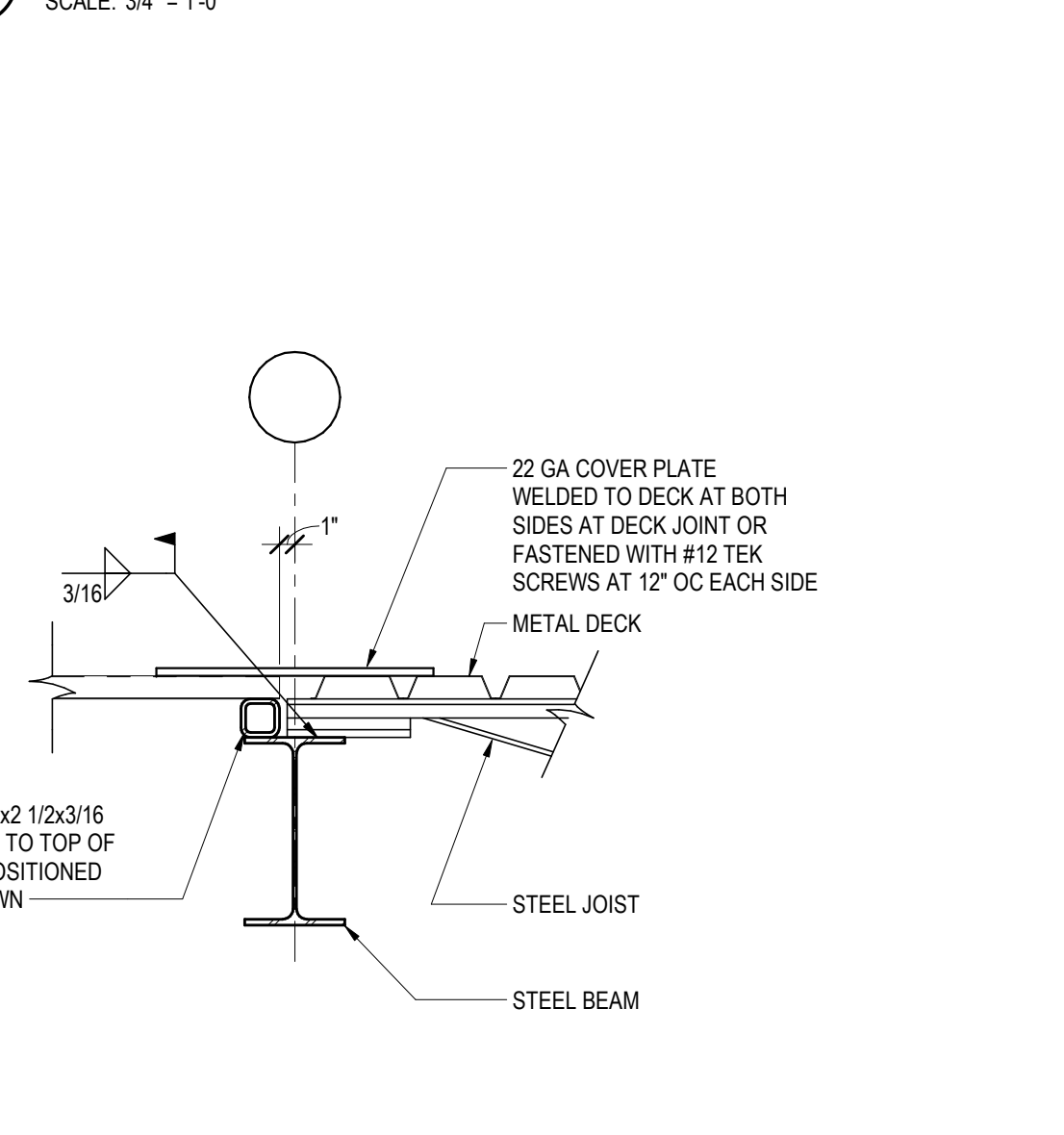
6 NON-LOAD BEARING CMU PERPENDICULAR TO JOISTS
SCALE: 3/4" = 1'-0"

7 NON-LOAD BEARING CMU PARALLEL TO JOISTS
SCALE: 1" = 1'-0"

8 JOIST BEARING
SCALE: 1" = 1'-0"

9 JOIST BEARING
SCALE: 1" = 1'-0"

10 BAR JOIST ON BEAM DETAIL
SCALE: 3/4" = 1'-0"



11 JOIST BEARING AT CHANGE IN JOIST DIRECTION
SCALE: 1" = 1'-0"

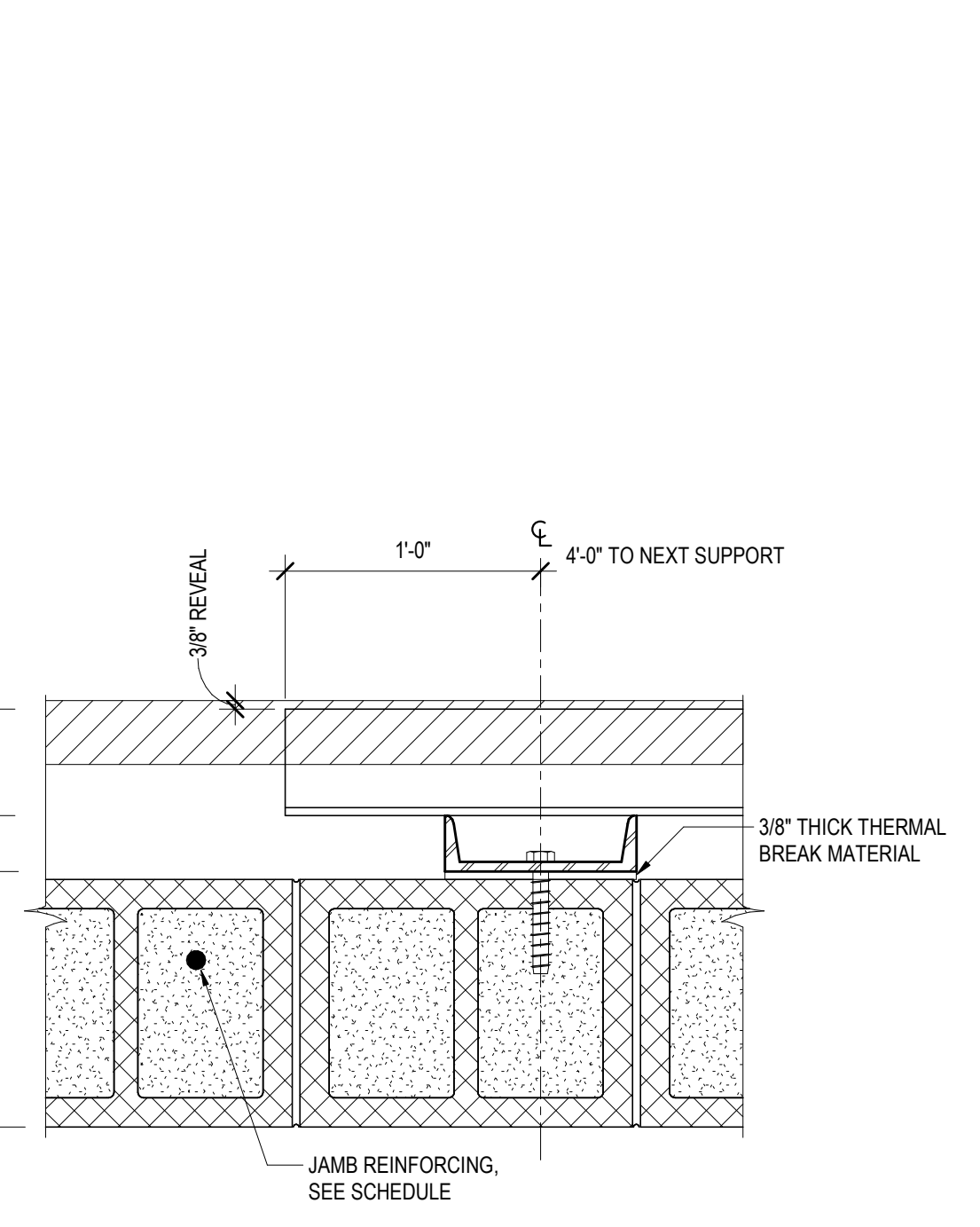
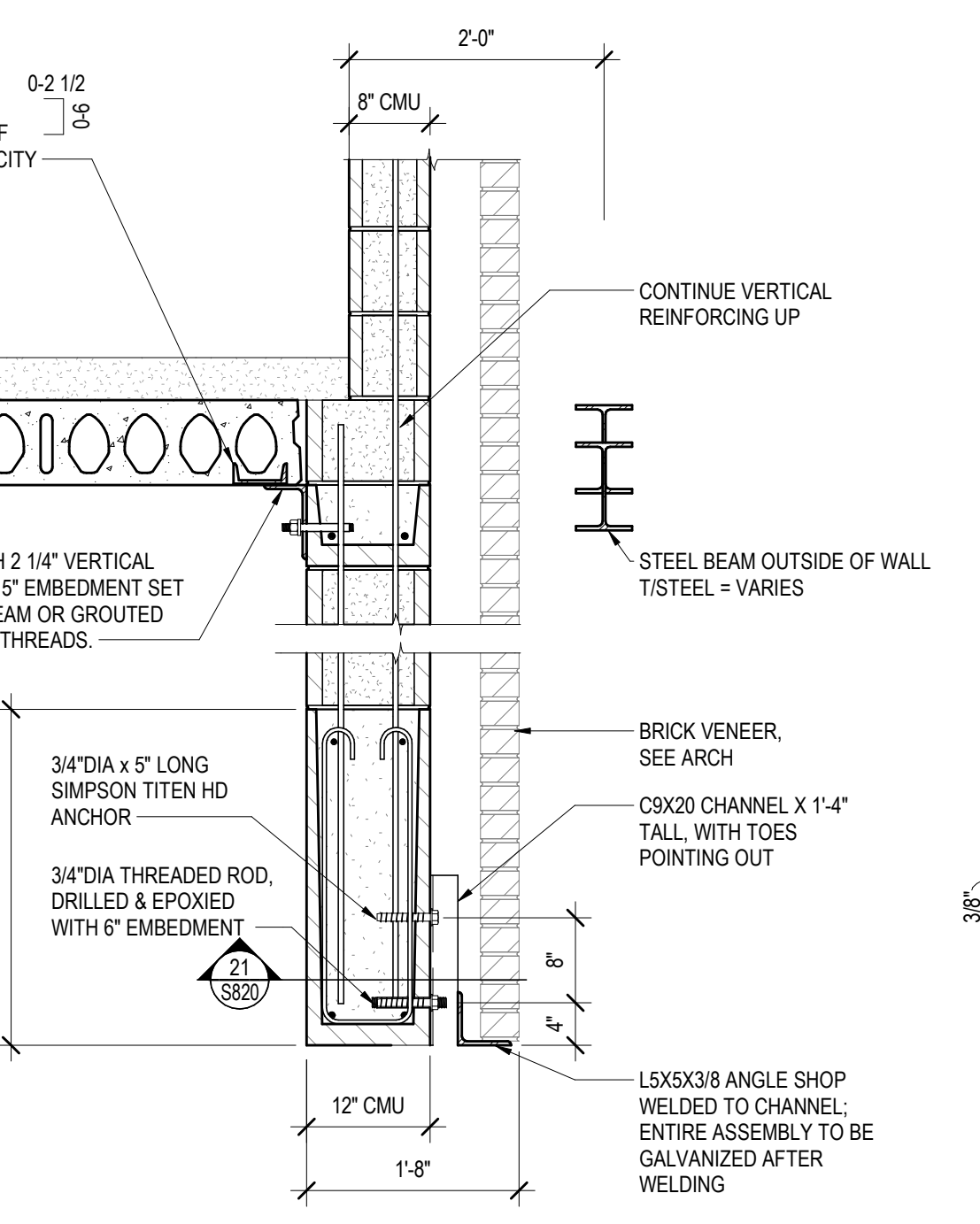
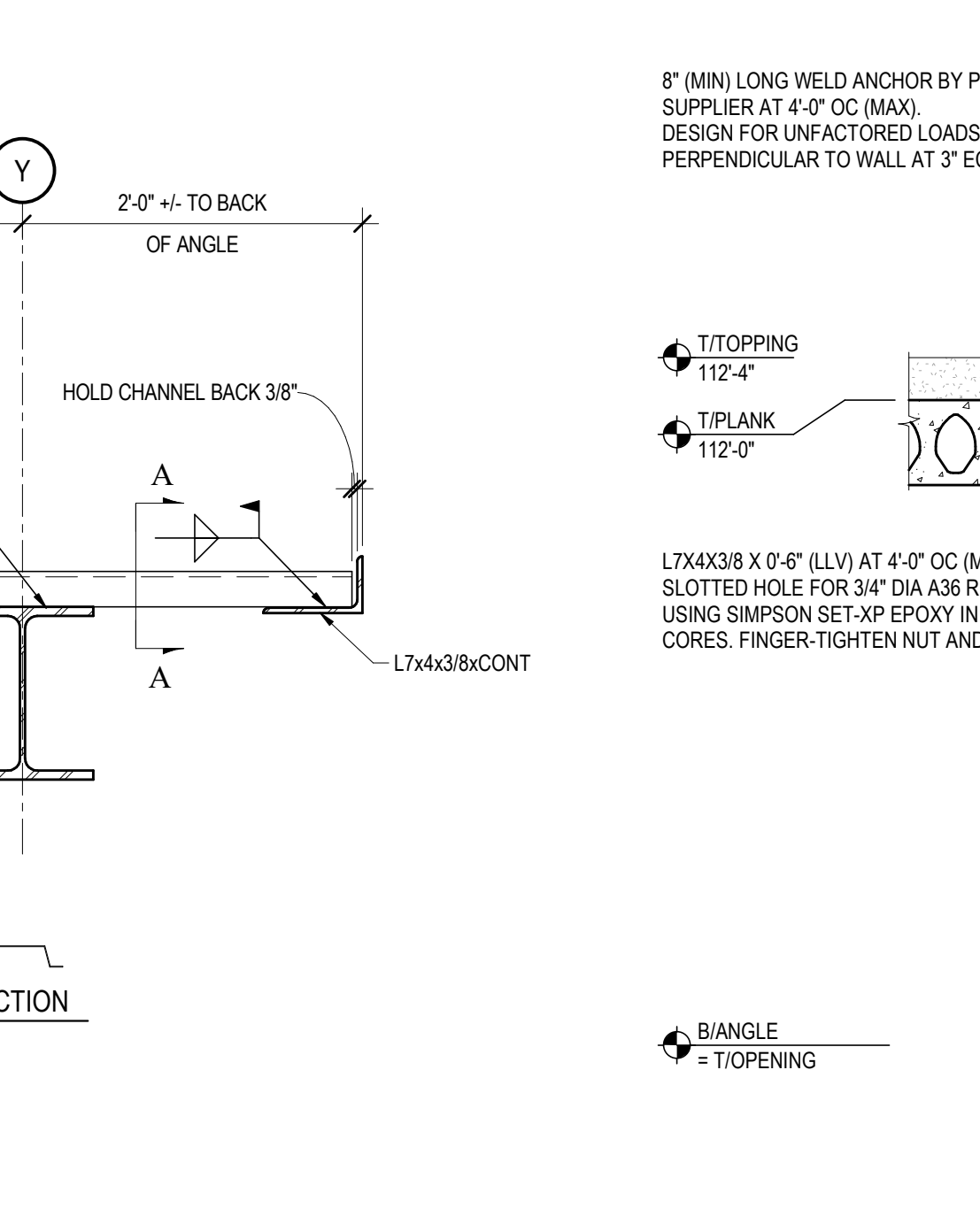
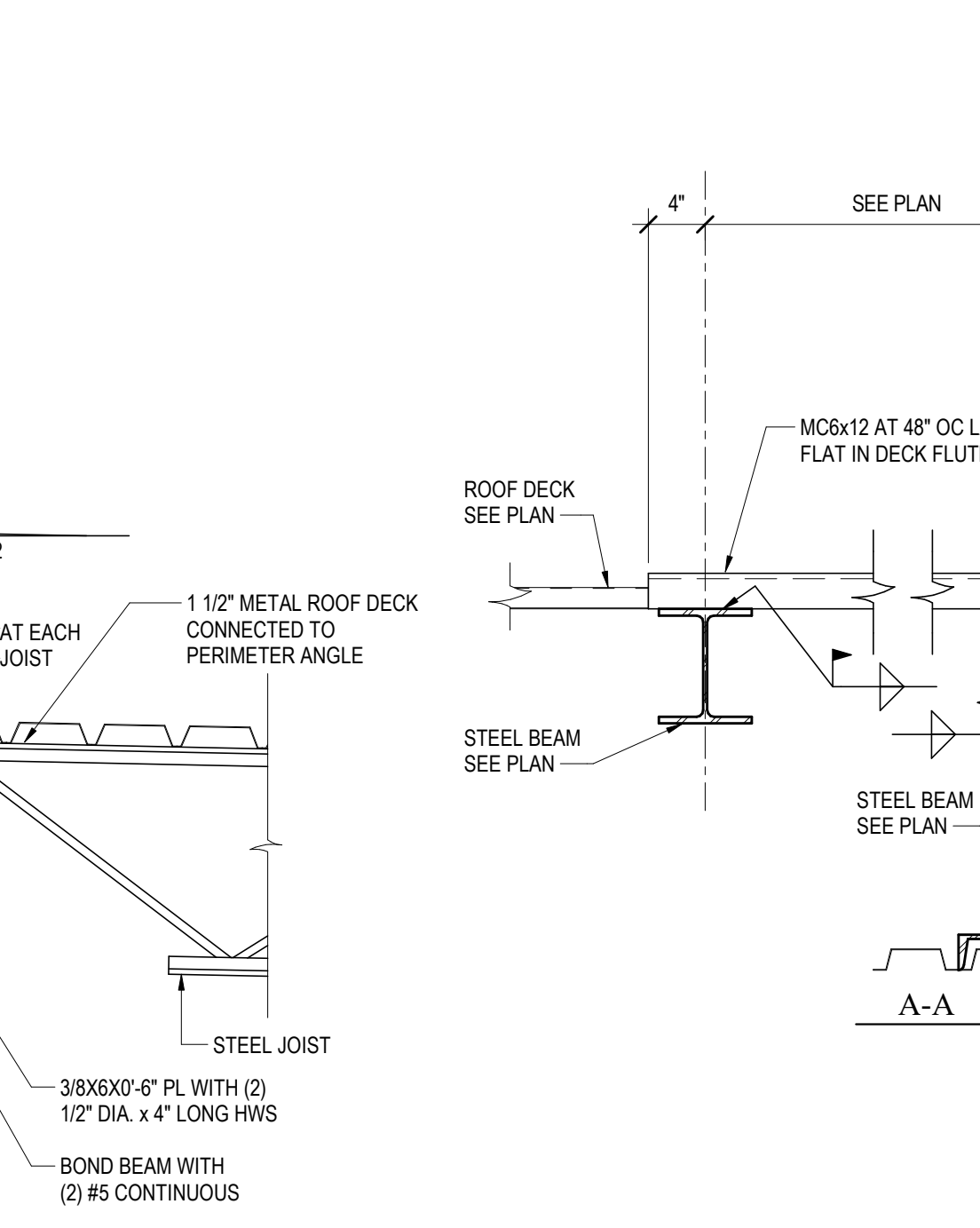
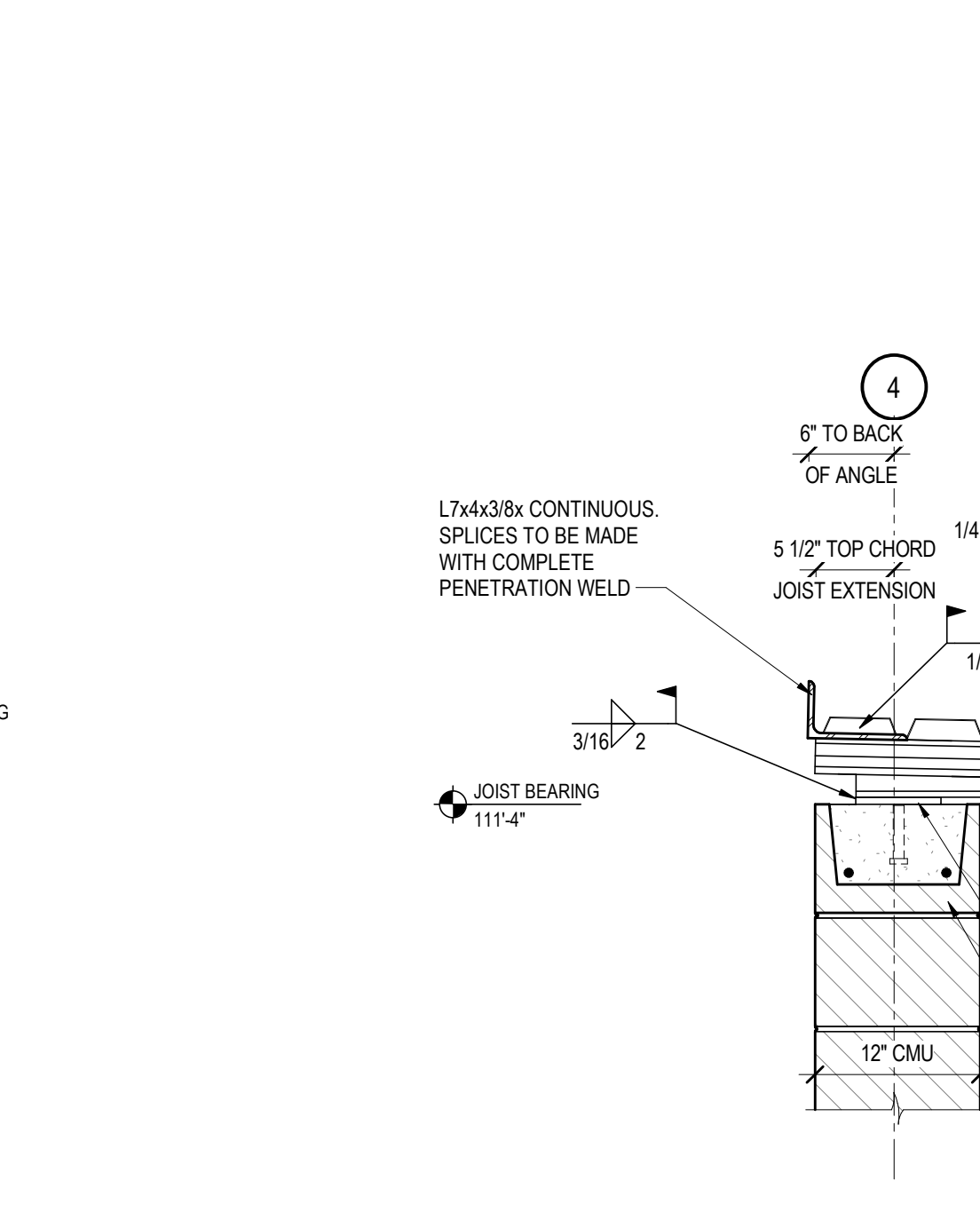
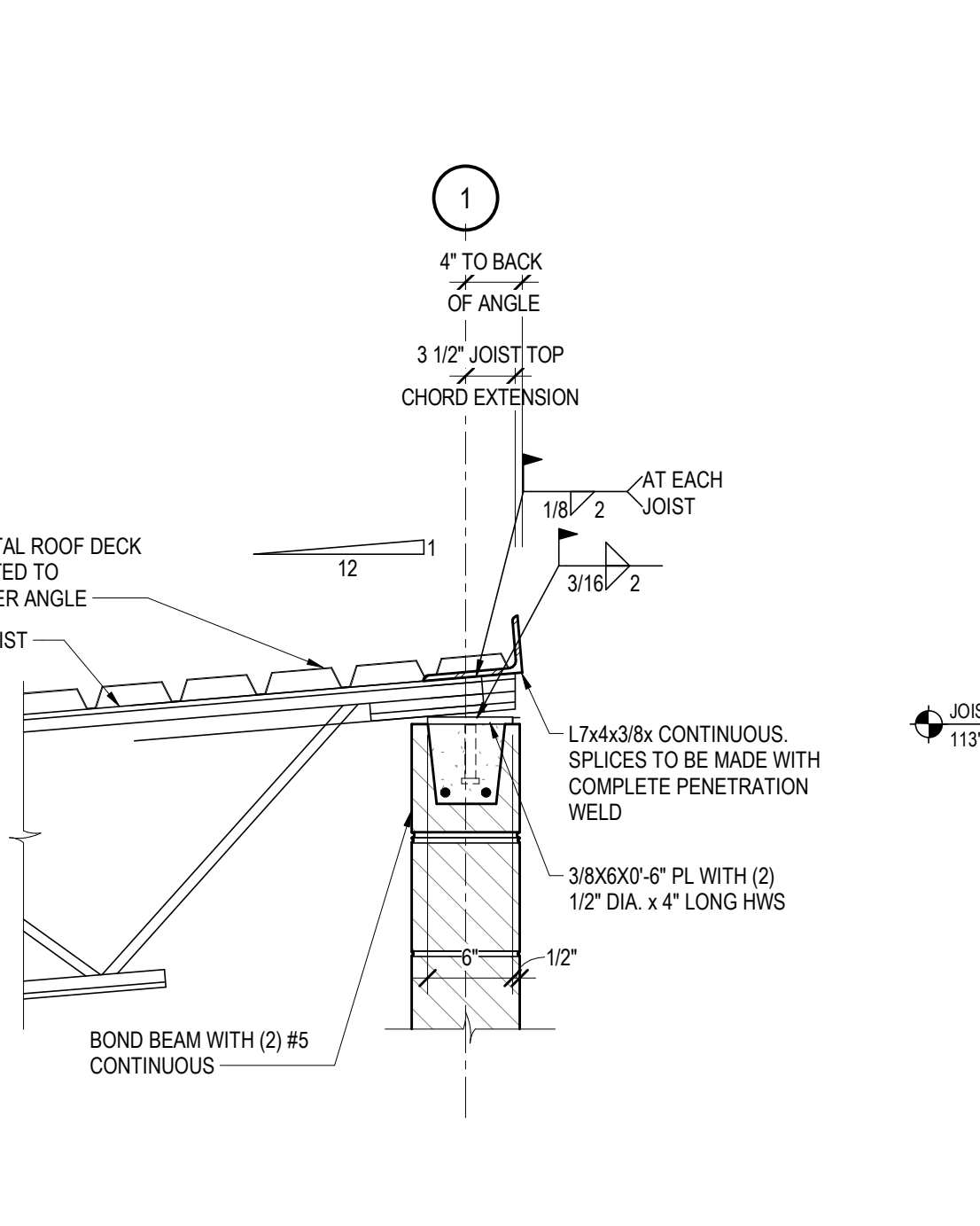
12 JOIST BEARING
SCALE: 3/4" = 1'-0"

13 JOIST BEARING SECTION AT WALL
SCALE: 3/4" = 1'-0"

14 LH JOIST ON MASONRY WALL
SCALE: 1" = 1'-0"

15 SECTION
SCALE: 3/4" = 1'-0"

16 SECTION
SCALE: 3/4" = 1'-0"



17 JOIST BEARING
SCALE: 1" = 1'-0"

18 JOIST BEARING
SCALE: 1" = 1'-0"

19 SECTION
SCALE: 1" = 1'-0"

20 SECTION
SCALE: 3/4" = 1'-0"

21 SECTION
SCALE: 1 1/2" = 1'-0"

No.	Description	Date